

# Repair of Annular Groove Graphite Heat Exchangers

## Technical Information

### Replacement of Impervious Graphite Discs in an Annular Groove Heat Exchanger

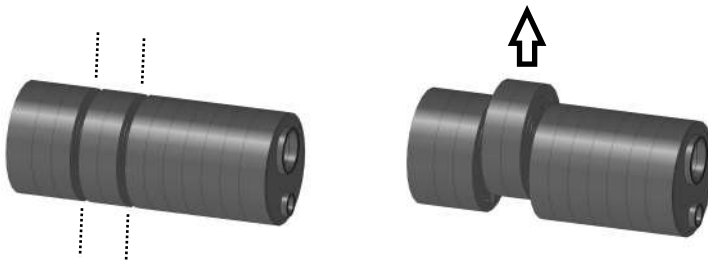
If necessary (bypass between the process and the service sides, broken disc, etc...) the internal graphite discs of an annular groove heat exchanger can be easily removed and replaced by brand new ones.

#### Typical repair procedure:

**Step 1:** the steel parts should be removed.



**Step 2:** with the help of a band saw the damaged / broken disc(s) shall be cut from the rest of the heat exchanger.



**Step 3:** After preparation of the surfaces, the new disc(s) should be properly positioned and cemented. The cemented parts should be heat treated.



**Step 4:** The steel parts should be reassembled. Finally the heat exchanger should be pressure tested.

#### Features

Easy, quick, and proven repair process

The repaired piece of equipment has the same dimensions, performance, and properties as the original piece of equipment

The corrosion resistance of the equipment after repair is identical to the original one